



***baja designs.***  
The Scientists of Lighting

## **1999-2010 Ford Super duty Fog Pocket Kit Instructions**

**(44-0079, 44-0080, 63-0821, 63-0822)**



2950 Norman Strasse • San Marcos • CA • 92069

Phone 760-560-2252 • Fax 760-560-0383

info@bajadesigns.com • www.bajadesigns.com



**baja designs.**  
*The Scientists of Lighting*

## LIMITED LIFETIME WARRANTY

Baja Designs proudly offers a LIFETIME WARRANTY against manufacturer's defect on all the products that we manufacture.

These are comprehensive warranties; other than the exclusions below – you're covered. If your LED or HID bulb burns out, you're covered. Additionally, cutting off our connector or changing your lenses does not automatically void your warranty.

### **Exclusions:**

Installation errors, abuse, misuse or crash damage. You must be the original owner of the product and can supply proof of purchase.

Baja Designs manufactures its own products as well as resells products manufactured by others. Baja Designs makes no express or implied warranties on products not manufactured by Baja Designs including without limitation any warranties or merchantability and fitness for a purpose. We will however, pass on all warranties made by the manufacturer, who has sole responsibility for performing such warranties.

Baja Designs will pay the freight if your product is less than 90 days old, otherwise defective products must be returned to Baja Designs, Inc., freight prepaid. At our option, we will repair or replace items in question and return them at no charge. If the identical product is no longer available, we will replace with a similar product of equal value. Baja Designs Inc. will not be responsible for any indirect or consequential damages in connection with defective merchandise.

Items purchased through a Baja Designs authorized dealer must be returned through the dealer. Only available on LED auxiliary lights and product must be in sellable condition at MSRP. Product that has been damaged in any way after the original purchase date will be excluded from this guarantee.

### **Indemnification:**

**Buyer hereby acknowledges off-roading, racing and driving at night are dangerous activities and that the products and/or supplies purchased from Baja Designs are used in an inherently dangerous activity that may endanger life and limb; and in no event shall the seller, or seller's heirs and assigns, be held liable for consequential damages, nor shall seller's liability on any claim for damages arising out of or connected with the sale, delivery, or use of purchased products and/or supplies exceed the purchase price of the products and/or supplies.**

**Buyer is responsible for ensuring that it uses the products (and its vehicle) in accordance with all applicable laws, regulations, guidelines, and standards of care. Buyer acknowledges that some products may only be used when off-roading, and Buyer will comply with all vehicle and road safety guidelines. Buyer is solely responsible for (and will indemnify and hold Bestop harmless for) any claims, losses, damages, fines, fees, costs, or other amounts arising out of Buyer's non-compliance with these provisions.**



**baja designs.**  
The Scientists of Lighting

### 1999-2010 Ford, Super Duty Fog Pocket Kit Instructions

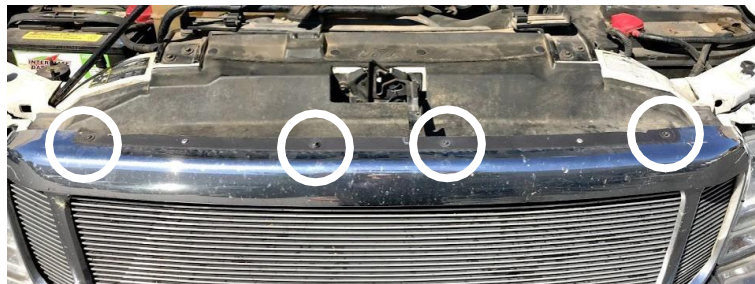
#### Special Note:

This kit works with three variants of the Super Duty series (99-04), (05-07), (08-10). The first instructions will cover the (99-04) and (05-07) models. The (08-10) instructions will follow.

### 1999-2007 Ford, Super Duty Fog Pocket Kit Instructions

#### Tools Required

- 10mm wrench
  - 10mm socket wrench
  - 7/16" wrench
  - 7/16" socket wrench
  - 8mm socket wrench
  - 13mm socket wrench
  - 4mm Allen wrench
  - Phillip's head and flathead screwdriver
1. To begin, open the hood and remove the four Phillip's head screws at the top of the grille (circled below). Support the grille from tipping forward. Removal of the grille will provide easy access to the top two bolts of each fog light assembly.

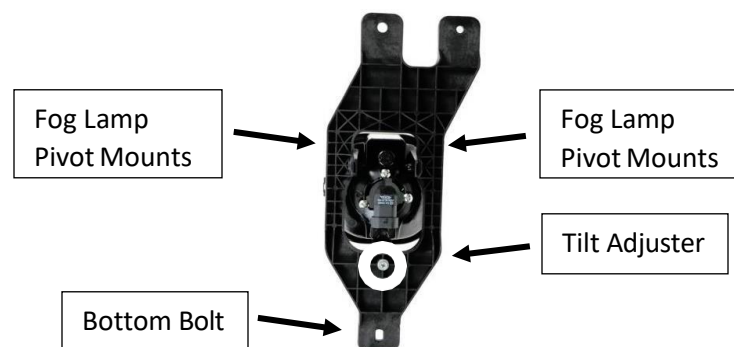


2. With a flathead screwdriver, pry up on the four clips that hold the bottom of the grille on the vehicle. To access the clips, place the flathead screwdriver between the top surface of the bumper and under the grille. The photo below shows the location of the clips. The next photo shows the clip.





3. Now that the top two fasteners of each OEM fog light assembly are exposed, the bottom bolt on each will need to be addressed. These bolts can be found underneath the vehicle on the backside of the front bumper. There is a small rubber flap that can be pushed away to access the bolts. If needed, use a flathead screwdriver to pry up the plastic fasteners holding the flap to the bumper. Below is an image of the OEM fog light bracket for reference.

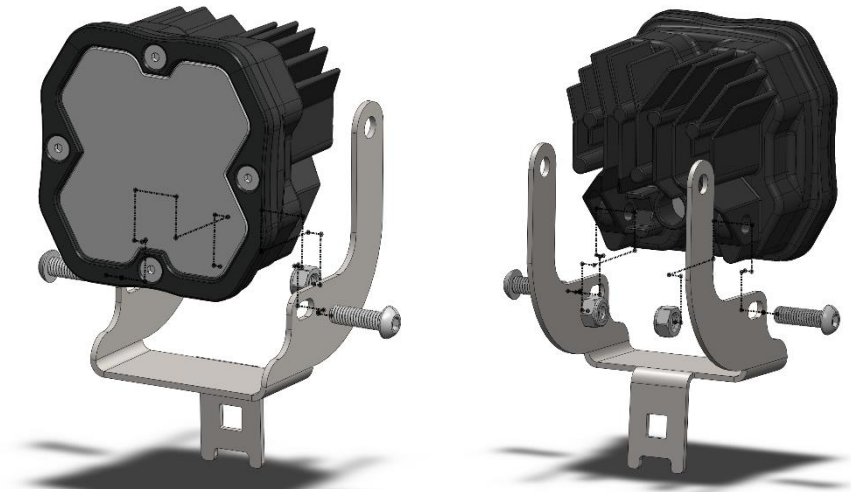


4. In order to remove the assembly from the bumper, the light will have to be removed from the bracket first. Using an 8mm socket wrench, remove the bolts from step 3. While still inside the bumper, the fog light assembly will have to be flipped around to expose the backside of the light. Using an 8mm wrench (or Phillip's head), remove the tilt adjuster bolt, spring, and plastic retaining nut. With the flathead screwdriver, pry the fog lamp pivot mount plastic fasteners from the assembly to detach fog lamp. The now disassembled fog light can be removed from the bumper in two pieces. Repeat each step for the other assembly.



**baja designs.**  
The Scientists of Lighting

- Set the OEM fog lamps aside and keep the plastic OEM brackets for the new assemblies. Locate the stainless-steel Super duty brackets and the Squadron 2.0 parts bags. With the 4mm Allen wrench, screw in the Squadron 2.0 6mm housing bolts through the bracket, into the light housing, and through the 6mm nylock nut. Repeat for the opposite side of the housing, then repeat for the other light. The exploded view below is for reference.



6.

**Special Note:**

The two following photos have an enlarged bezel that is only for (11-16), which is not used for this kit.

- Now it is time to mount the new light and bracket to the OEM plastic fog bracket. Using the 7/16" wrench and socket wrench, thread the 7/16" hex head bolt into the washer, plastic bracket pivot mount, steel bracket, washer, and nylon locking nut. Repeat for the adjacent fastener.

**Note: the steel bracket goes on the inside of the OEM plastic bracket pivot mounts.**





8. Reuse the OEM fog lamp bracket tilt adjustment hardware with the new bracket circled below.



9. Adjust the housing bolts and OEM tilt adjuster until the desired fitment is attained.
10. Repeat steps 6-8 for the opposite side of the vehicle.
11. The new complete fog light assemblies will fit through the bumper for installation. The pictures below show the orientation that allows the new completed assemblies to fit through the opening. Install the new fog lamp assemblies and brackets with the 8mm socket wrench and fasteners from step 3. Tighten.



12. Attach the plug 'n play adapter to the factory harness and the Squadron 2.0 power cord. Repeat this step for the other side. Tie the wires away from any hot and/or rotating components.



**baja designs.**  
The Scientists of Lighting

13. To re-install the grille, move it into position and push the bottom of the grille to snap the clips back into place. With the Philip's head screwdriver, replace the four screws at the top of the grille and tighten.

### 2008-2010 Ford, Super Duty Fog Pocket Kit Instructions

#### Tools Required

- 7/16" wrench
  - 7/16" socket wrench
  - 4mm Allen wrench
  - 8mm socket wrench
  - 13mm socket wrench
1. To begin, locate the bracket at the front of the passenger side wheel well pictured below. With the 13mm socket wrench, remove the three bolts. Place the bracket aside. Repeat steps for the driver's side.



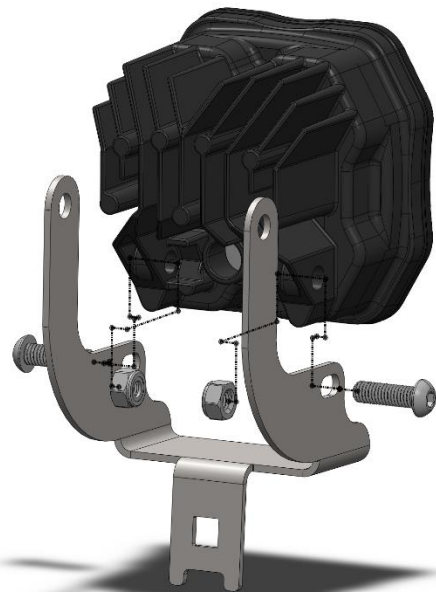
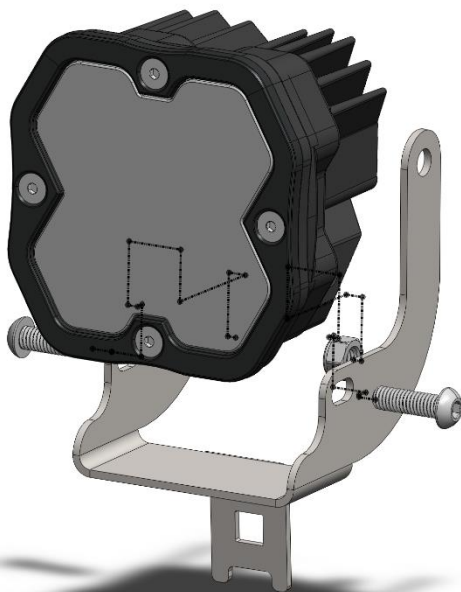


**baja designs.**  
The Scientists of Lighting

2. Unplug the OEM fog light connector from the OEM harness. With the 8mm socket wrench, remove the three bolts holding on the fog light assembly circled below. Carefully remove the assembly from the vehicle. Repeat step for the driver's side.



3. Locate the stainless-steel Super Duty brackets and the Squadron 2.0 parts bags. With the 4mm Allen wrench, screw in the Squadron 2.0 6mm housing bolts through the bracket, into the light housing, and through the 6mm nylock nut. Repeat step for the opposite side of the housing, then repeat for the other light. The exploded view below is for reference.





**baja designs.**  
The Scientists of Lighting

**Special Note:**

The two photos on this page have an enlarged bezel that is only for (11-16), which is not used for this kit.

4. Now it is time to mount the new light and bracket to the OEM plastic fog bracket. Using the 7/16" wrench and socket wrench, thread the 7/16" hex head bolt into the washer, plastic bracket pivot mount, steel bracket, washer, and nylon locking nut. Repeat for the adjacent fastener.

**Note: the steel bracket goes on the inside of the OEM plastic bracket pivot mounts.**



5. Reuse the OEM fog lamp bracket tilt adjustment hardware with the new bracket circled below.





6. Adjust the housing bolts and OEM tilt adjuster until desired fitment is attained.
7. Repeat steps 4-6 for the opposite side of the vehicle.
8. Install the new fog lamp assemblies and brackets with the 8mm socket wrench and fasteners from step 2.
9. Attach the plug 'n play adapter to the vehicle's factory harness and the Squadron 2.0 power cord. Repeat step for the other side. Tie the wires away from any hot and/or rotating components.
10. Re-install the brackets from step 1 with the 13mm socket wrench.

Re-torque all the fasteners after 100 miles.

Your install is now complete! Thank you for choosing Baja Designs.



**baja designs.**  
The Scientists of Lighting

**Backlight add-on harness instructions for Squadron 2.0**

**Note:** Included with this harness is four fuse taps. In the event that none will work for your application, a splice connector is included (shown on right).

1. Locate the fuse panel in the engine compartment. Remove cover.
2. Observe the inside of the fuse box cover, or the owner's manual to determine fuse locations and functions. The goal is to find a suitable circuit that is powered on when the vehicle is turned on. It is important to choose a fuse location that does not power sensitive electrical components, such as sensors and ignition modules. Choose a fuse that is activated by turning the key and remains active while the vehicle is starting and running. The IGN fuse is highly recommended for this. Using other circuits to run the backlight may result in the color changing when not desired.
3. Once the fuse location has been chosen, the multimeter or test light will be used to determine which side of the fuse is power and which side is the output. Using either tool, touch the positive test lead to one side of the fuse socket and touch the negative lead to the negative battery post, or any convenient ground. With the keys in the off position, neither side of the fuse socket should have power. If they do, another fuse location will need to be chosen.
4. Now, turn the keys to the on position and measure each side of the fuse socket. When the test light illuminates, or the multimeter DC voltage measures 12-14V, the power side of the fuse has been determined. Insert the fuse tap into the socket with the arrowed side blade (shown in image ii) contacting the power side. Plug in the backlight harness to the female bullet receptacle of the fuse tap. If the fuse socket originally had a fuse, place it into the open socket on the fuse tap.
5. Every fuse panel is different and sometimes there are adjacent components that make it difficult or impossible to plug in a fuse tap. In this case, the splice connector will need to be used. Find a wire that is powered when the keys are on. Ideally, this wire would power the daytime running lights and not an electrically sensitive component like a sensor. With the backlight harness inserted into the female bullet receptacle of the splice connector, clasp the splice over the desired power wire and clamp with pliers until an audible click is heard. (See image iii for reference)

**Tools Required**

- Trim Tool
- Test Light, or Multimeter
- (Or Flathead Screwdriver)
- Scissors

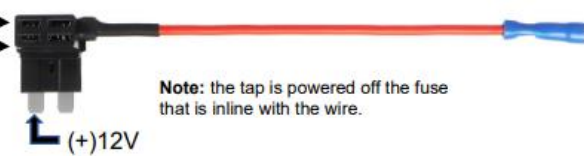
i

- ATC -
- ATM -
- LP-Mini -
- Micro2 -



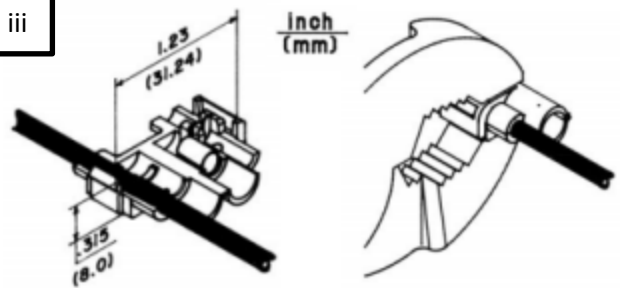
ii

Tap fuse  
OEM fuse



Note: the tap is powered off the fuse that is inline with the wire.

iii



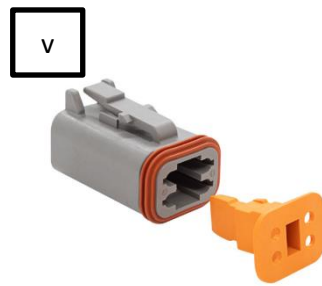
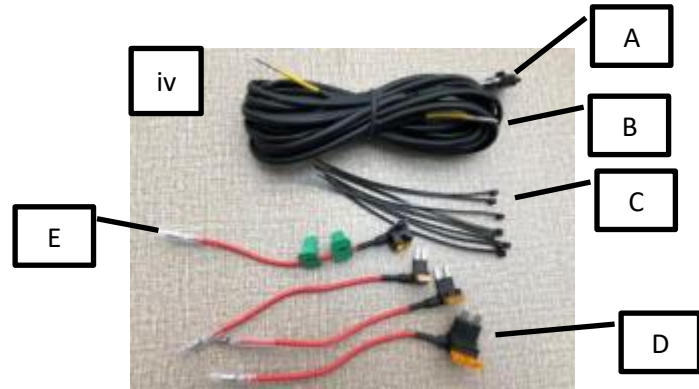
Fuse tap kit part #: 63-9209



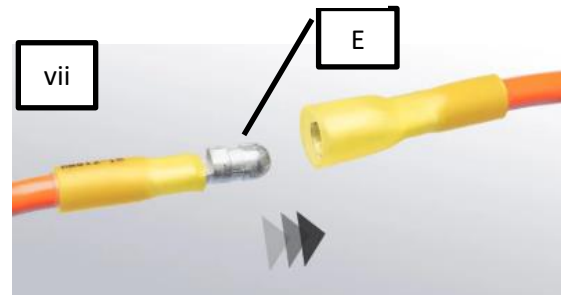
**baja designs.**  
The Scientists of Lighting

### Backlight add-on harness instructions for Squadron 2.0

6. Use the provided 5-amp fuse in the fuse tap for the backlight add-on harness (See image ii for reference).
7. Remove the Wedge lock from the plug by using a flat head screwdriver and **gently** prying along the edges with a flathead to release the lock (see image v for reference)
8. Locate the backlight add-on harness supplied in the kit. If a cavity plug was inserted previously in the PnP (Plug-n-Play) adapter, please remove it and insert the terminal inside the (3) pin location. (See image vii for reference)
9. To reinstall the wedge lock, simply push the wedge lock back in until it clicks in. (See image v for reference)
10. Determine the best routing for the backlight add-on harness.
11. Connect the bullet connector from the backlight add-on harness to the fuse tap and secure the wire harness. (Use image iii for reference)
12. Turn on the vehicle and test to see if the backlight function on the Squadron 2.0 works appropriately.
13. Use included zip ties to tie the harness out of the way of any hot and/or rotating components.



A: Splice connector  
B: Harness  
C: Zip ties  
D: Fuse taps  
E: Bullet connector





**baja designs.**  
The Scientists of Lighting

### Backlight switch adapter instructions for Squadron 2.0

1. Connect the bullet connectors from the switch inline between the fuse tap and the backlight add-on harness.
2. Turn the vehicle on and rapidly turn the switch on and off until the desired color is displayed as the backlight.
3. Once the desired color has been achieved, the switch can be either removed or left in. To remove the switch, turn the vehicle off and remove the switch. Reconnect the bullet connectors between the fuse tap and the backlight add-on harness. To leave the switch in line, secure the switch so it does not move. **Be sure to always leave switch in the "on" position if the switch will be left in.**

